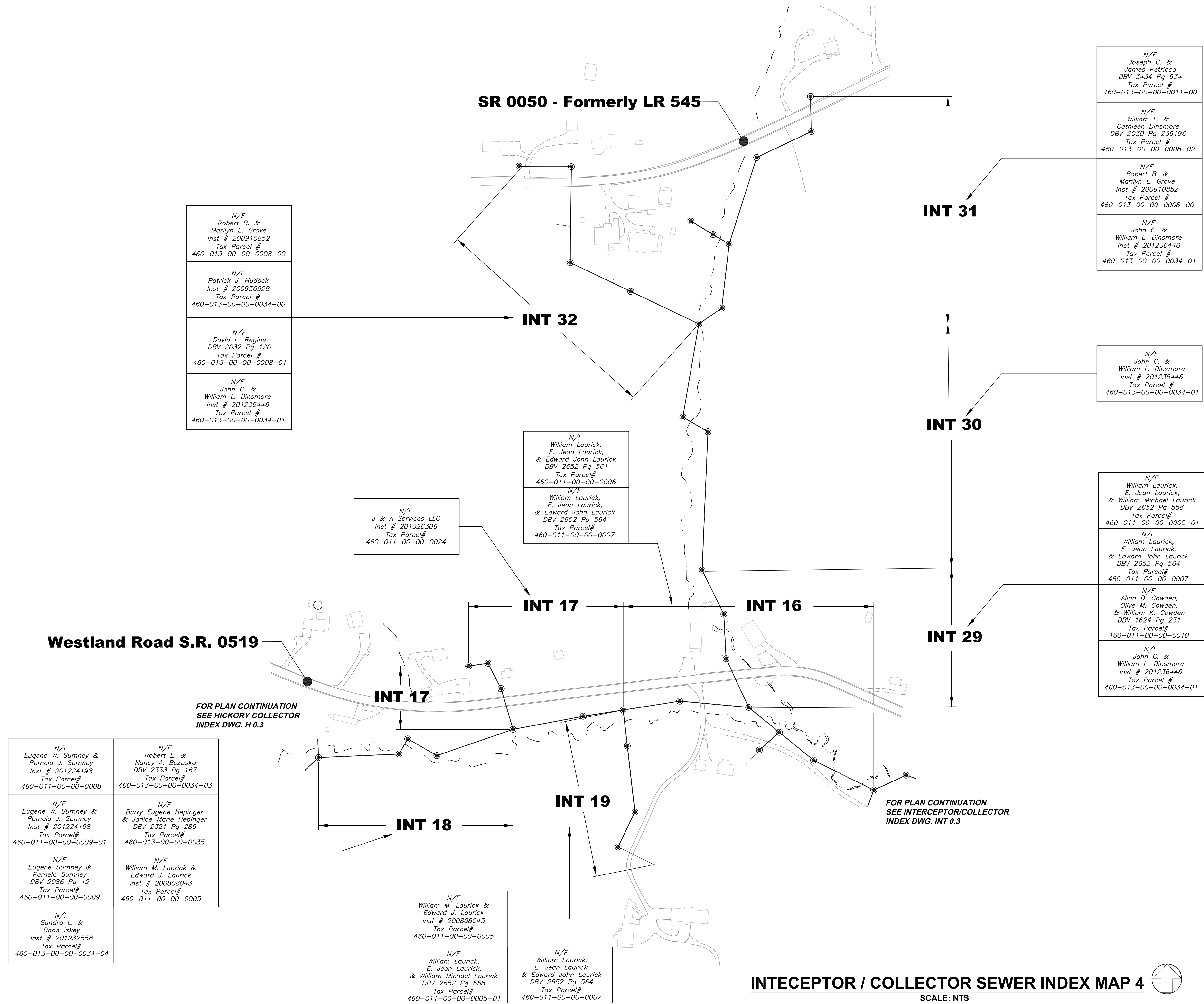


NOTE:
 ITEMS IDENTIFIED WITH UPPER CASE TEXT ARE PROPOSED.
 Items Identified with Mixed Case Text are Existing.



N/F
 Robert B. &
 Marilyn E. Grove
 Inst # 200910852
 Tax Parcel #
 460-013-00-00-0008-00

N/F
 Patrick J. Hudock
 Inst # 200936928
 Tax Parcel #
 460-013-00-00-0034-00

N/F
 David L. Regine
 DBV 2032 Pg 120
 Tax Parcel #
 460-013-00-00-0008-01

N/F
 John C. &
 William L. Dinsmore
 Inst # 201236446
 Tax Parcel #
 460-013-00-00-0034-01

N/F
 Joseph C. &
 James Petricca
 DBV 3434 Pg 934
 Tax Parcel #
 460-013-00-00-0011-00

N/F
 William L. &
 Cathleen Dinsmore
 DBV 2030 Pg 239196
 Tax Parcel #
 460-013-00-00-0008-02

N/F
 Robert B. &
 Marilyn E. Grove
 Inst # 200910852
 Tax Parcel #
 460-013-00-00-0008-00

N/F
 John C. &
 William L. Dinsmore
 Inst # 201236446
 Tax Parcel #
 460-013-00-00-0034-01

N/F
 J & A Services LLC
 Inst # 201326306
 Tax Parcel #
 460-011-00-00-0024

N/F
 William Laurick,
 E. Jean Laurick,
 & Edward John Laurick
 DBV 2652 Pg 561
 Tax Parcel #
 460-011-00-00-0006

N/F
 William Laurick,
 E. Jean Laurick,
 & Edward John Laurick
 DBV 2652 Pg 564
 Tax Parcel #
 460-011-00-00-0007

N/F
 John C. &
 William L. Dinsmore
 Inst # 201236446
 Tax Parcel #
 460-013-00-00-0034-01

N/F
 William Laurick,
 E. Jean Laurick,
 & William Michael Laurick
 DBV 2652 Pg 558
 Tax Parcel #
 460-011-00-00-0005-01

N/F
 William Laurick,
 E. Jean Laurick,
 & Edward John Laurick
 DBV 2652 Pg 564
 Tax Parcel #
 460-011-00-00-0007

N/F
 Allan D. Cowden,
 Olive M. Cowden,
 & William K. Cowden
 DBV 1624 Pg 231
 Tax Parcel #
 460-011-00-00-0010

N/F
 John C. &
 William L. Dinsmore
 Inst # 201236446
 Tax Parcel #
 460-013-00-00-0034-01

N/F
 Eugene W. Sumney &
 Pamela J. Sumney
 Inst # 201224198
 Tax Parcel #
 460-011-00-00-0008

N/F
 Robert E. &
 Nancy A. Bezusko
 DBV 2333 Pg 167
 Tax Parcel #
 460-013-00-00-0034-03

N/F
 Eugene W. Sumney &
 Pamela J. Sumney
 Inst # 201224198
 Tax Parcel #
 460-011-00-00-0009-01

N/F
 Barry Eugene Hepinger
 & Janice Marie Hepinger
 DBV 2321 Pg 289
 Tax Parcel #
 460-013-00-00-0035

N/F
 Eugene Sumney &
 Pamela Sumney
 DBV 2086 Pg 12
 Tax Parcel #
 460-011-00-00-0009

N/F
 William M. Laurick &
 Edward J. Laurick
 Inst # 200808043
 Tax Parcel #
 460-011-00-00-0005

N/F
 Sandra L. &
 Dana Iskey
 Inst # 201232558
 Tax Parcel #
 460-013-00-00-0034-04

N/F
 William M. Laurick &
 Edward J. Laurick
 Inst # 200808043
 Tax Parcel #
 460-011-00-00-0005

N/F
 William Laurick,
 E. Jean Laurick,
 & William Michael Laurick
 DBV 2652 Pg 558
 Tax Parcel #
 460-011-00-00-0005-01

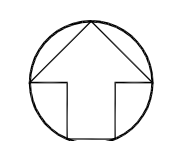
N/F
 William Laurick,
 E. Jean Laurick,
 & Edward John Laurick
 DBV 2652 Pg 564
 Tax Parcel #
 460-011-00-00-0007

FOR PLAN CONTINUATION
 SEE HICKORY COLLECTOR
 INDEX DWG. H 0.3

FOR PLAN CONTINUATION
 SEE INTERCEPTOR/COLLECTOR
 INDEX DWG. INT 0.3

INTECEPTOR / COLLECTOR SEWER INDEX MAP 4

SCALE: NTS



PRELIMINARY

Scale:	As Shown	Revisions	
Date:	OCTOBER 2015	Date	
Drawn By:	MIKE	Revisions	
Checked By:	HOF	Date	
Approved By:	SHG	Revisions	
Order No.	495-07	Date	
Drawing No.	INT 0.4	Revisions	
Sheet No.	XX of XX	Date	

MOUNT PLEASANT TOWNSHIP MUNICIPAL AUTHORITY
 WASHINGTON COUNTY, PENNSYLVANIA
 CONTRACT NUMBER 2016-03
 WESTLAND RUN INTERCEPTOR AND COLLECTOR SEWERS
 INDEX MAP 4 OF 4

5173 Campbell Run Road
 Pottsville, PA 17855
 Phone: 412.494.0510
 Fax: 412.494.0426
 info@klhengineers.com