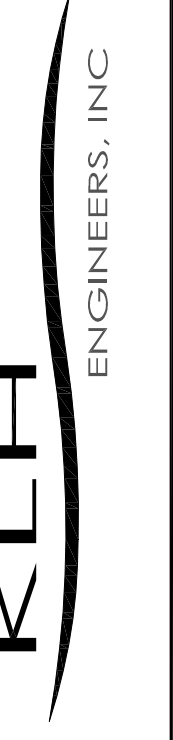


NOTE:
 ITEMS IDENTIFIED WITH UPPER CASE TEXT ARE PROPOSED.
 Items Identified with Mixed Case Text are Existing.

PRELIMINARY

5173 Campbell Run Road
 Pottsville, PA 17855
 Phone: 412.494.0510
 Fax: 412.494.0426
 info@klhengineers.com



MOUNT PLEASANT TOWNSHIP MUNICIPAL AUTHORITY
 WASHINGTON COUNTY, PENNSYLVANIA
 CONTRACT NUMBER 2016-03
 WESTLAND RUN INTERCEPTOR AND COLLECTOR SEWERS
 INDEX MAP 3 OF 4

Scale: As Shown
 Date: OCTOBER 2015
 Drawn By: MIKE
 Checked By: HOF
 Approved By: SHG

Order No.
495-07

Drawing No.
INT 0.3

Sheet No.
XX of XX

N/F James J. McGraw & Lisa M. McGraw DBV 3431 Pg 685 Tax Parcel# 460-011-00-00-0011	N/F Richard D. Campbell & Beverly P. Campbell DBV 1764 Pg 340 Tax Parcel# 460-011-00-00-0011-01
N/F William Laurick, Edward John Laurick & E. Jean Laurick DBV 2652 Pg 558 Tax Parcel# 460-011-00-00-0005-01	N/F Dwight C. Wagner Inst# 200109253 Tax Parcel# 460-011-00-00-0012-03
N/F William Laurick, Edward John Laurick & E. Jean Laurick DBV 2652 Pg 561 Tax Parcel# 460-011-00-00-0006	N/F Allen D. Cowden, Olive M. Cowden & William K. Cowden DBV 1624 Pg 231 Tax Parcel# 460-011-00-00-0010
N/F Tyler M. Ayers & Jessica W. Ayers Inst# 201229161 Tax Parcel# 460-011-00-00-0012	N/F Dwight C. Wagner Inst# 200109253 Tax Parcel# 460-011-00-00-0012-02

N/F Ronald J. Kwiatkowski & Gloria J. Kwiatkowski DBV 2012 Pg 12 Tax Parcel# 460-011-00-00-0013
N/F Lynette R. Gallo n.k.a. Lynette R. Harrington Inst# 201101265 Tax Parcel# 460-011-00-00-0014

N/F Lynette R. Gallo Inst# 201121742 Tax Parcel# 460-011-00-00-0015
N/F Lynette R. Gallo n.k.a. Lynette R. Harrington Inst# 201101265 Tax Parcel# 460-011-00-00-0014

N/F Lynette R. Gallo Inst# 201121742 Tax Parcel# 460-011-00-00-0015
N/F Lynette R. Gallo n.k.a. Lynette R. Harrington Inst# 201101265 Tax Parcel# 460-011-00-00-0014

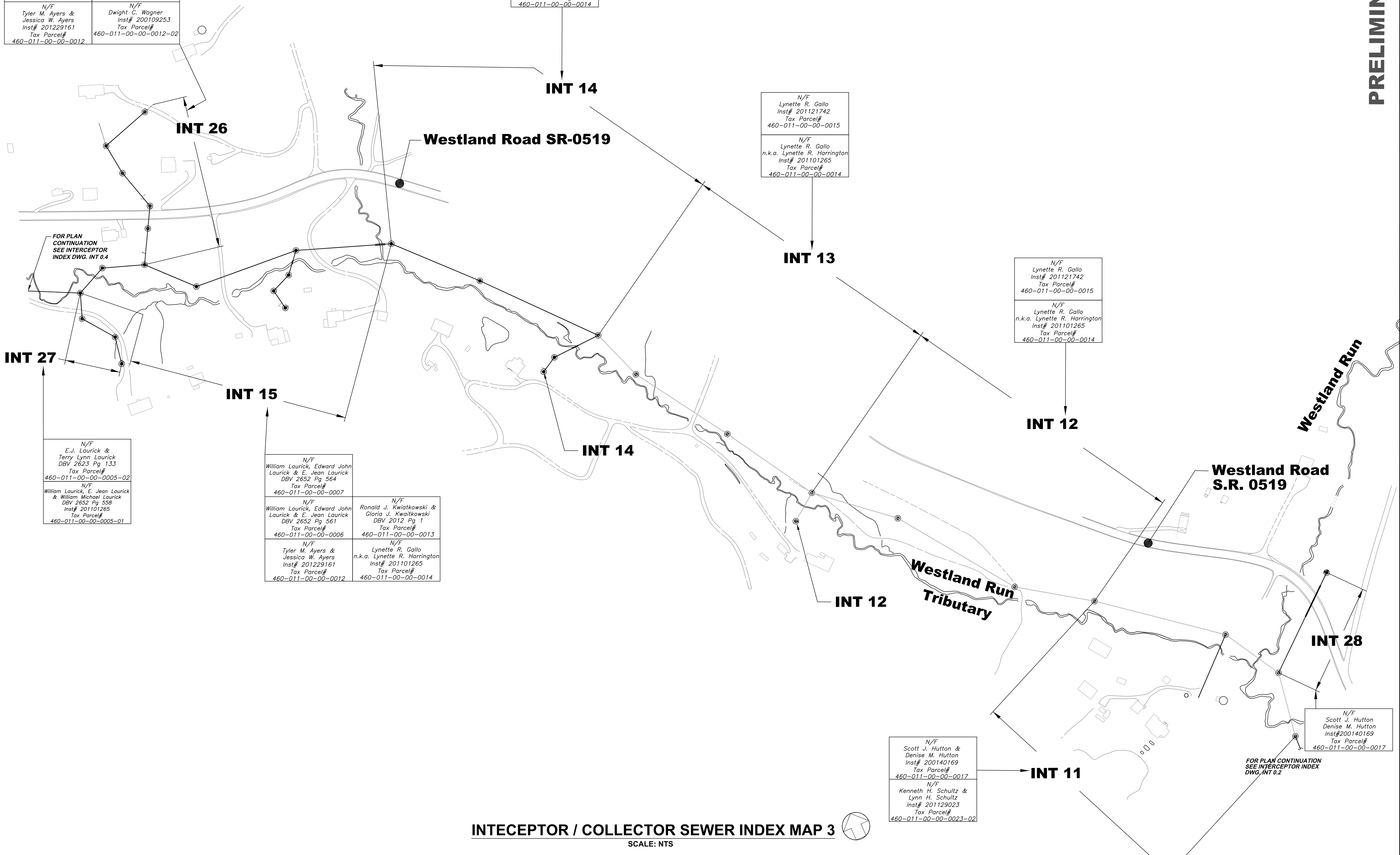
N/F E.J. Laurick & Terry Lynn Laurick DBV 2623 Pg 133 Tax Parcel# 460-011-00-00-0005-02
N/F William Laurick, E. Jean Laurick & William Michael Laurick DBV 2652 Pg 558 Inst# 201101265 Tax Parcel# 460-011-00-00-0005-01

N/F William Laurick, Edward John Laurick & E. Jean Laurick DBV 2652 Pg 564 Tax Parcel# 460-011-00-00-0007
--

N/F William Laurick, Edward John Laurick & E. Jean Laurick DBV 2652 Pg 561 Tax Parcel# 460-011-00-00-0006	N/F Ronald J. Kwiatkowski & Gloria J. Kwiatkowski DBV 2012 Pg 1 Tax Parcel# 460-011-00-00-0013
N/F Tyler M. Ayers & Jessica W. Ayers Inst# 201229161 Tax Parcel# 460-011-00-00-0012	N/F Lynette R. Gallo n.k.a. Lynette R. Harrington Inst# 201101265 Tax Parcel# 460-011-00-00-0014

N/F Scott J. Hutton & Denise M. Hutton Inst# 200140169 Tax Parcel# 460-011-00-00-0017
N/F Kenneth H. Schultz & Lynn H. Schultz Inst# 201129023 Tax Parcel# 460-011-00-00-0023-02

N/F Scott J. Hutton Denise M. Hutton Inst# 200140169 Tax Parcel# 460-011-00-00-0017
--



INTECEPTOR / COLLECTOR SEWER INDEX MAP 3
 SCALE: NTS