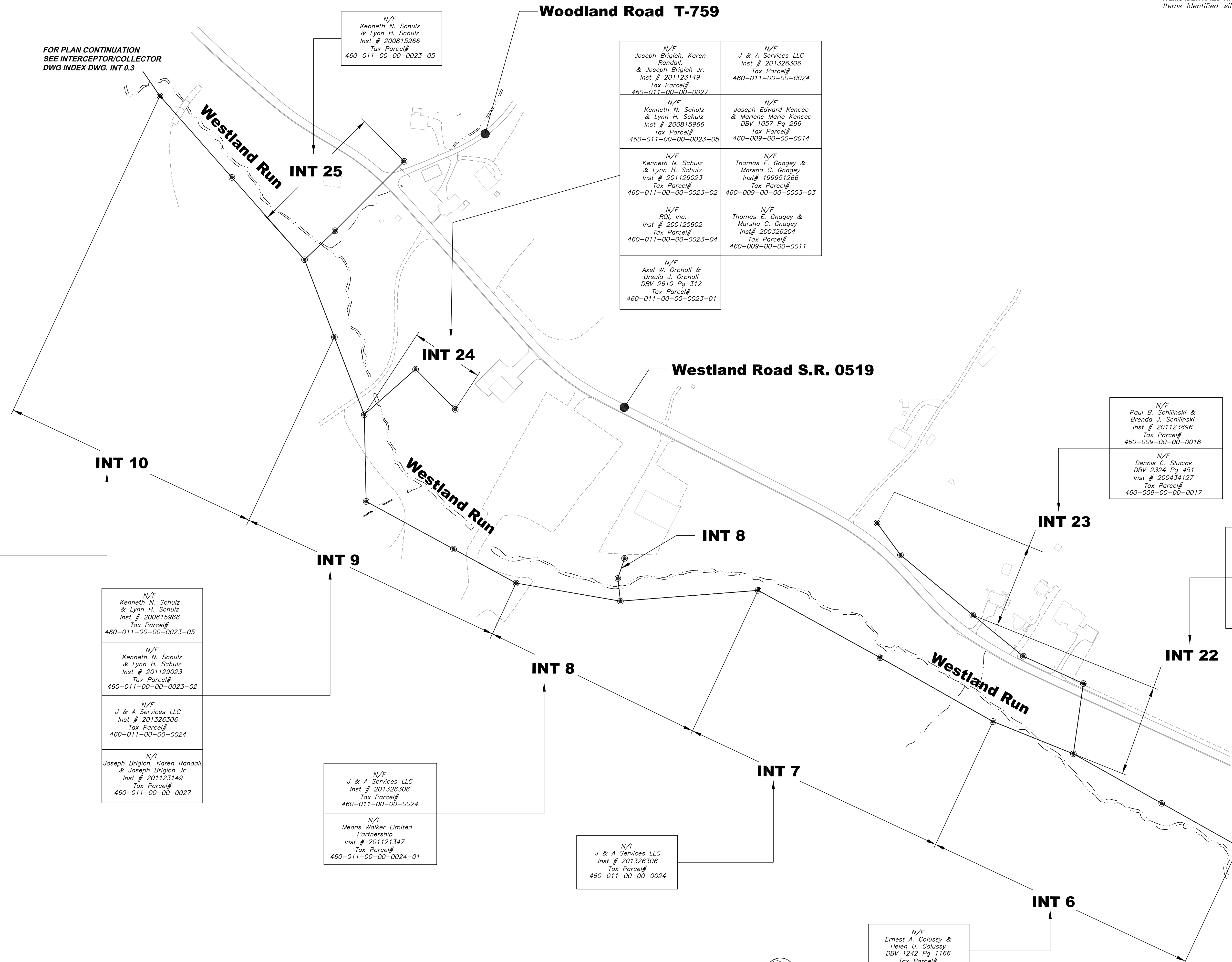


NOTE:
 ITEMS IDENTIFIED WITH UPPER CASE TEXT ARE PROPOSED.
 Items Identified with Mixed Case Text are Existing.

PRELIMINARY

FOR PLAN CONTINUATION
 SEE INTERCEPTOR/COLLECTOR
 DWG INDEX DWG. INT 0.3



N/F Joseph Brigich, Karen Randall, & Joseph Brigich Jr. Inst # 201123149 Tax Parcel# 460-011-00-00-0027	N/F J & A Services LLC Inst # 201326306 Tax Parcel# 460-011-00-00-0024
N/F Kenneth N. Schulz & Lynn H. Schulz Inst # 200815966 Tax Parcel# 460-011-00-00-0023-05	N/F Joseph Edward Kencec & Marlene Marie Kencec DBV 1057 Pg 296 Tax Parcel# 460-009-00-00-0014
N/F Kenneth N. Schulz & Lynn H. Schulz Inst # 201129023 Tax Parcel# 460-011-00-00-0023-02	N/F Thomas E. Gnagey & Marsha C. Gnagey Inst# 199951266 Tax Parcel# 460-009-00-00-0003-03
N/F ROI, Inc. Inst # 200125902 Tax Parcel# 460-011-00-00-0023-04	N/F Thomas E. Gnagey & Marsha C. Gnagey Inst# 200326204 Tax Parcel# 460-009-00-00-0011
N/F Axel W. Orphall & Ursula J. Orphall DBV 2610 Pg 312 Tax Parcel# 460-011-00-00-0023-01	

N/F
Kenneth N. Schulz
& Lynn H. Schulz
Inst # 201129023
Tax Parcel#
460-011-00-00-0023-02

N/F
Kenneth N. Schulz
& Lynn H. Schulz
Inst # 200815966
Tax Parcel#
460-011-00-00-0023-05

N/F
Kenneth N. Schulz
& Lynn H. Schulz
Inst # 200815966
Tax Parcel#
460-011-00-00-0023-05

N/F
Kenneth N. Schulz
& Lynn H. Schulz
Inst # 201129023
Tax Parcel#
460-011-00-00-0023-02

N/F
J & A Services LLC
Inst # 201326306
Tax Parcel#
460-011-00-00-0024

N/F
Joseph Brigich, Karen
Randall,
& Joseph Brigich Jr.
Inst # 201123149
Tax Parcel#
460-011-00-00-0027

N/F
J & A Services LLC
Inst # 201326306
Tax Parcel#
460-011-00-00-0024

N/F
Means Walker Limited
Partnership
Inst # 201121347
Tax Parcel#
460-011-00-00-0024-01

N/F
J & A Services LLC
Inst # 201326306
Tax Parcel#
460-011-00-00-0024

N/F
Ernest A. Colussy &
Helen U. Colussy
DBV 1242 Pg 1166
Tax Parcel#
460-009-00-00-0019

N/F
Paul B. Schilinski &
Brenda J. Schilinski
Inst # 201123896
Tax Parcel#
460-009-00-00-0018

N/F
Dennis C. Sluciak
DBV 2324 Pg 451
Inst # 200434127
Tax Parcel#
460-009-00-00-0017

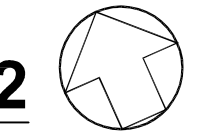
N/F
Paul B. Schilinski &
Brenda J. Schilinski
Inst # 201123896
Tax Parcel#
460-009-00-00-0018

N/F
Ernest A. Colussy &
Helen U. Colussy
DBV 1242 Pg 1166
Tax Parcel#
460-009-00-00-0019

FOR PLAN CONTINUATION
 SEE INTERCEPTOR/COLLECTOR
 INDEX DWG. INT 0.1

INTECEPTOR / COLLECTOR SEWER INDEX MAP 2

SCALE: NTS



Revisions	Date	Revisions	Date
5173 Campbell Run Road Pittsburg, PA 15205 Phone: 412.494.0510 Fax: 412.494.0426 info@klhengineers.com			
KLH ENGINEERS, INC.			
MOUNT PLEASANT TOWNSHIP MUNICIPAL AUTHORITY			
WASHINGTON COUNTY, PENNSYLVANIA			
CONTRACT NUMBER 2016-03			
WESTLAND RUN INTERCEPTOR AND COLLECTOR SEWERS			
INDEX MAP 2 OF 4			
Scale:	As Shown	Checked By:	Approved By:
Date:	OCTOBER 2015	MIKE	SHG
Drawn By:		HOF	
Order No.	495-07		
Drawing No.	INT 0.2		
Sheet No.	XX of XX		