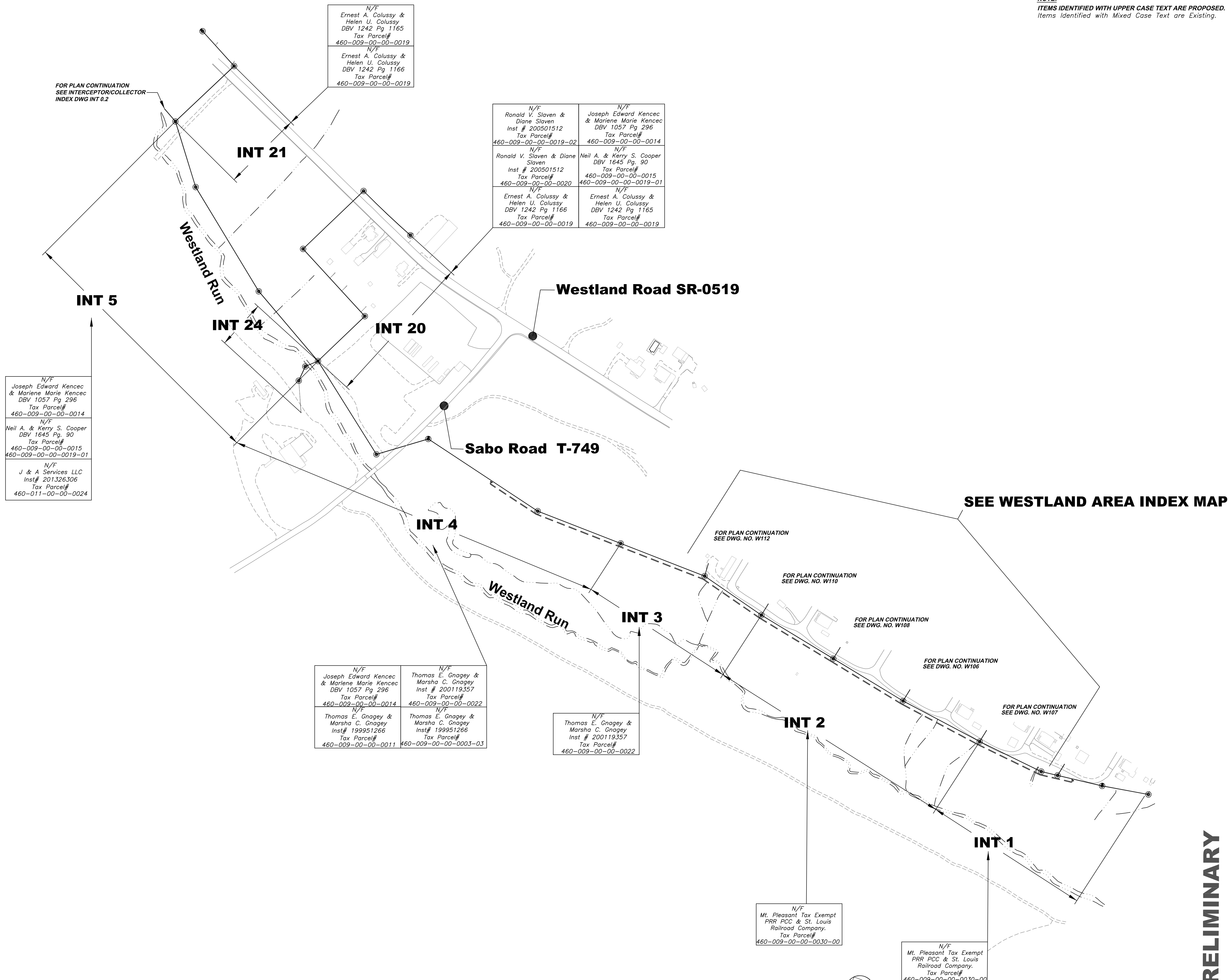


NOTE:
ITEMS IDENTIFIED WITH UPPER CASE TEXT ARE PROPOSED.
Items Identified with Mixed Case Text are Existing.



N/F
Joseph Edward Kencec
& Marlene Marie Kencec
DBV 1057 Pg 296
Tax Parcel#
460-009-00-00-0014

N/F
Neil A. & Kerry S. Cooper
DBV 1645 Pg. 90
Tax Parcel#
460-009-00-00-0015
460-009-00-00-0019-01

N/F
J & A Services LLC
Inst# 201326306
Tax Parcel#
460-011-00-00-0024

N/F
Ernest A. Colussy &
Helen U. Colussy
DBV 1242 Pg 1165
Tax Parcel#
460-009-00-00-0019

N/F
Ernest A. Colussy &
Helen U. Colussy
DBV 1242 Pg 1166
Tax Parcel#
460-009-00-00-0019

N/F
Ronald V. Slaven &
Diane Slaven
Inst # 200501512
Tax Parcel#
460-009-00-00-0019-02

N/F
Joseph Edward Kencec
& Marlene Marie Kencec
DBV 1057 Pg 296
Tax Parcel#
460-009-00-00-0014

N/F
Ronald V. Slaven & Diane
Slaven
Inst # 200501512
Tax Parcel#
460-009-00-00-0020

N/F
Neil A. & Kerry S. Cooper
DBV 1645 Pg. 90
Tax Parcel#
460-009-00-00-0015
460-009-00-00-0019-01

N/F
Ernest A. Colussy &
Helen U. Colussy
DBV 1242 Pg 1166
Tax Parcel#
460-009-00-00-0019

N/F
Ernest A. Colussy &
Helen U. Colussy
DBV 1242 Pg 1165
Tax Parcel#
460-009-00-00-0019

N/F
Joseph Edward Kencec
& Marlene Marie Kencec
DBV 1057 Pg 296
Tax Parcel#
460-009-00-00-0014

N/F
Thomas E. Gnagey &
Marsha C. Gnagey
Inst # 200119357
Tax Parcel#
460-009-00-00-0022

N/F
Thomas E. Gnagey &
Marsha C. Gnagey
Inst# 199951266
Tax Parcel#
460-009-00-00-0011

N/F
Thomas E. Gnagey &
Marsha C. Gnagey
Inst# 199951266
Tax Parcel#
460-009-00-00-0003-03

N/F
Thomas E. Gnagey &
Marsha C. Gnagey
Inst # 200119357
Tax Parcel#
460-009-00-00-0022

N/F
Mt. Pleasant Tax Exempt
PRR PCC & St. Louis
Railroad Company.
Tax Parcel#
460-009-00-00-0030-00

N/F
Mt. Pleasant Tax Exempt
PRR PCC & St. Louis
Railroad Company.
Tax Parcel#
460-009-00-00-0030-00

PRELIMINARY

INTECEPTOR / COLLECTOR SEWER INDEX MAP 1
SCALE: NTS

Revisions	Date	Revisions	Date

5173 Campbell Run Road
Pittsburg, PA 15295
Phone: 412.494.0510
Fax: 412.494.0426
info@klhengineers.com

KLH
ENGINEERS, INC.

MOUNT PLEASANT TOWNSHIP MUNICIPAL AUTHORITY
WASHINGTON COUNTY, PENNSYLVANIA
CONTRACT NUMBER 2016-03
WESTLAND RUN INTERCEPTOR AND COLLECTOR SEWERS
INDEX MAP 1 OF 4

As Shown	10/2015
Drawn By:	MIKE
Checked By:	HOF
Approved By:	SHG

Order No.
495-07

Drawing No.
INT 0.1

Sheet No.
XX of XX